



B e H o spol. s r.o.

Staré Ransko 90 * 582 63 Kruceburk * Czech Republic

SALE OF INDUSTRIAL CENTRIFUGES



QUALITY * CUSTOMER SATISFACTION * PRICE

www.beho.cz

INDUSTRIAL CENTRIFUGES

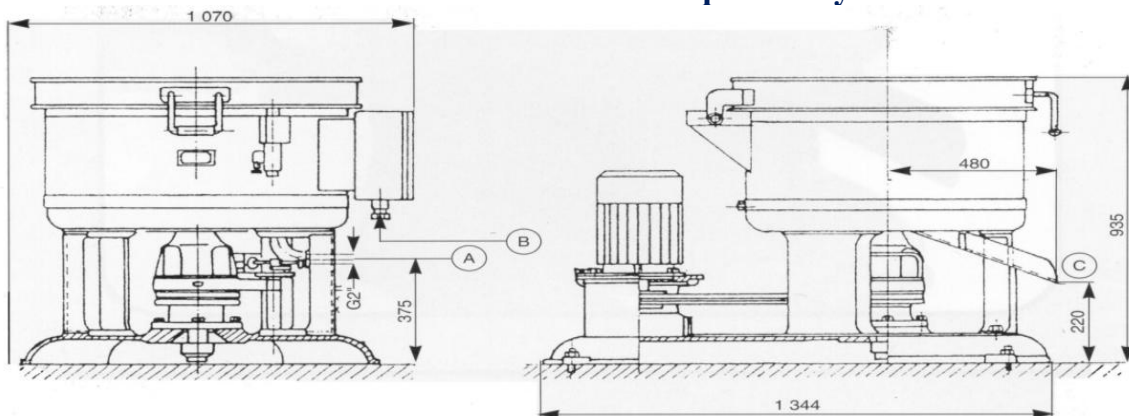
CHC 61 A

The main representative of this sector is an industrial-type centrifuge CHC 61A. It is produced in various embodiments with different types of heating the lid. It is used mainly in electroplating plants for excess centrifuging bath after completion of the process.

Its application is very broad e.g. jewelry, different types of drying and centrifuging after degreasing processes. Of course there is high variability of various designs of drums according to customer requirements.

Embodiments of the device:

- lid of stainless steel, with heater, heating units by appointment 2x1500W
- stainless steel drum with holes 2,5-10 mm
- shell of drum stainless steel
- maximum load of the drum 50 kg
- electromagnetic blocking of the lid - lid can be opened only after stop of the drum
- drum speed - adjustable in the range 650 to 1250 rev / min., drum diameter 600mm
- starting and stopping of a frequency converter, after the selected time has elapsed, the centrifuge stops itself
- electric switchboard can be according to customer requirements placed on the wall or on a stand
- goods can be either of the drum empties the hole in the bottom of the drum (opening size approx 120x80mm), or select upper part of of the drum open after lifting the lid (centrifuge is designed with removable drum)
- color is optional by the customer



A - Drain fluid B - Electricity supply
C - Emptying of the drum with 30 ° inclination