



B e H o spol. s r.o.

Staré Ransko 90 * 582 63 Krucemburk * Czech Republic

CONTINUOUS CRATE WASHER



QUALITY * CUSTOMER SATISFACTION * PRICE

www.beho.cz

CONTINUOUS CRATE WASHER

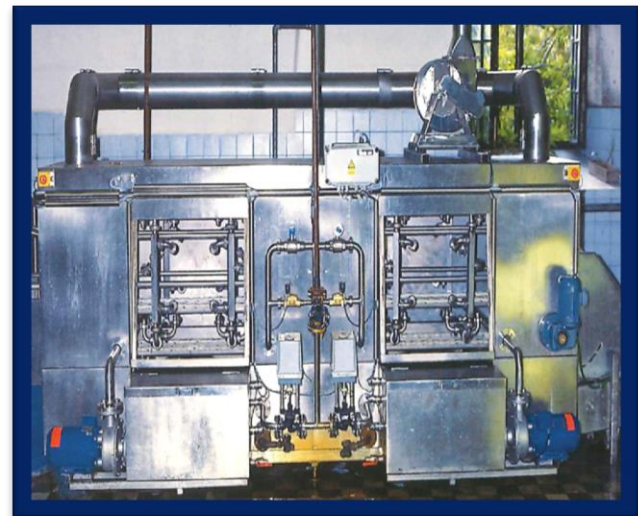
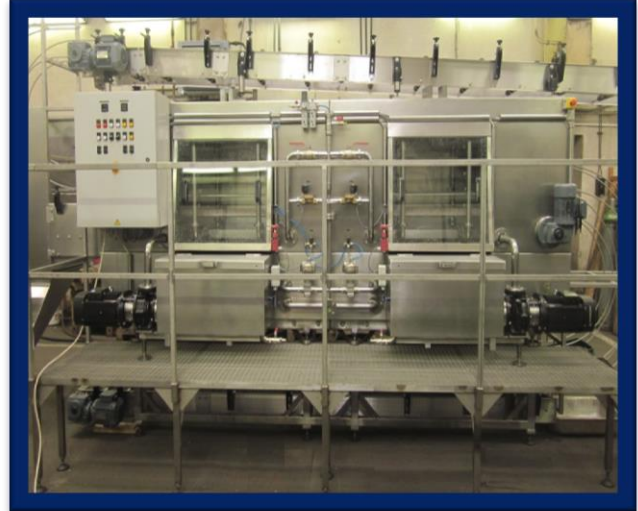
MP12 * MP18 * MP30

Crate washers used in bottles and other lines to ensure proper continuous cleaning of containers before loading bottles or other products.

The machines of series MP are fully automatic with stainless steel construction.

Properties of continuous crate washer:

- the automatic operation
- the function turning crates before and behind the machine
- circulation of washing media is closed, bath is heated by steam or electricity
- removable covers for easy cleaning jets
- standard model with two chambers and using of washing additives. With respect to required output can be selected a multi-chamber embodiment.
- simple service and maintenance



DEVICE PARAMETERS

CONTINUOUS CRATE WASHER - SERIES MP				
	type	12	18	30
	unit			
CRATE ENTRY	-	logitudinally and transversally	logitudinally and transversally	logitudinally and transversally
CRATE DIMENSIONS max.	P x R x V	460 x 400 x 380	460 x 400 x 380	460 x 400 x 380
OUTPUT max.	crate/hr.	2000	1800	3000
INPUT	kW	12	12	18
SATURATED STEAM	kg/hr.	200 při p = 0,4 Mpa	200 při p = 0,4 Mpa	200 při p = 0,4 Mpa
WATER	m ³ /hr.	0,5	0,5	0,7