



# **BeHo spol. s r.o.**

Staré Ransko 90 \* 582 63 Kruceburk \* Czech Republic

## **TRADITIONAL PRODUCER OF EQUIPMENT FOR PRODUCTION OF BUTTER**



**QUALITY \* CUSTOMER SATISFACTION \* PRICE**

**[www.beho.cz](http://www.beho.cz)**

# CONTINUOUS BUTTER MAKING MACHINE

## KZ \* ZKU \* KM

Continuous butter making machines (CBMM) are intended for butter production lines. The assembly line enables their supplementing by auxiliary equipment specified in accordance with technology used and with local conditions.

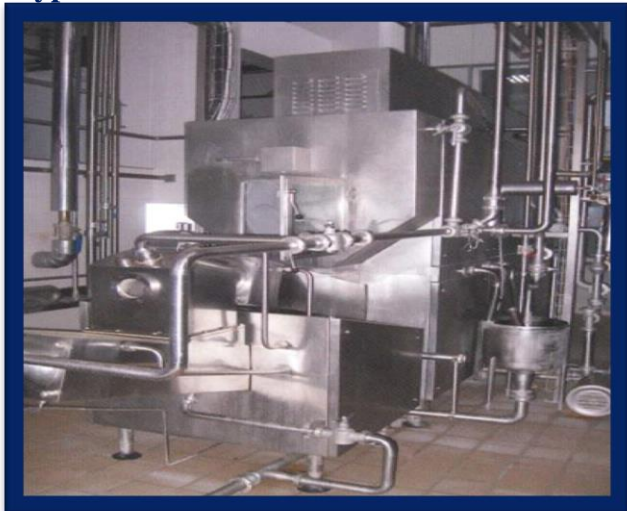
type KZ



type ZKU



type KM

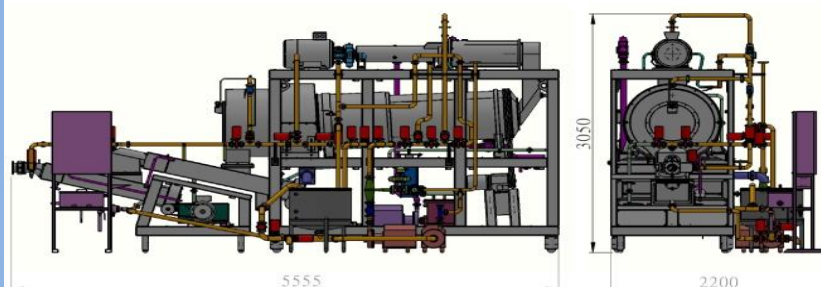


We offer proven series of continuous butter making machines of type KM and ZKU, we established a new type of continuous butter making machine series KZ.

### Advantages:

- two kneading machines
- vacuum chamber, which ensures vacuum of butter and increases its durability
- new mechanical seals on the churning cylinder
- a completely new electrical installation including a new touch-control
- a cooled-off buttermilk cools direct butter grain in separating cylinder

Parameters	type KZ - ZKU - KM
Output	700 – 3 000 kg/ hour
Fat content of the cream processed	36 - 44 %
Cream acidity	32 °SH
Water content in butter	16 - 25 %
Fat content in buttermilk	max. 0,4 %
Non-fats in butter	max. 1,5 %
Air content in butter	1%
Water dispersion in butter	5 µm
Temperature of butter leaving the machine	15 °C
Rotation frequency of churning cylinder	700 - 1800 r/min.
Rotation frequency of separating cylinder	12 - 30 r/min.
Rotational frequency of the kneading machine	36 - 86 r/min.



# BUTTER SILO AND BUTTER TRANSPORT

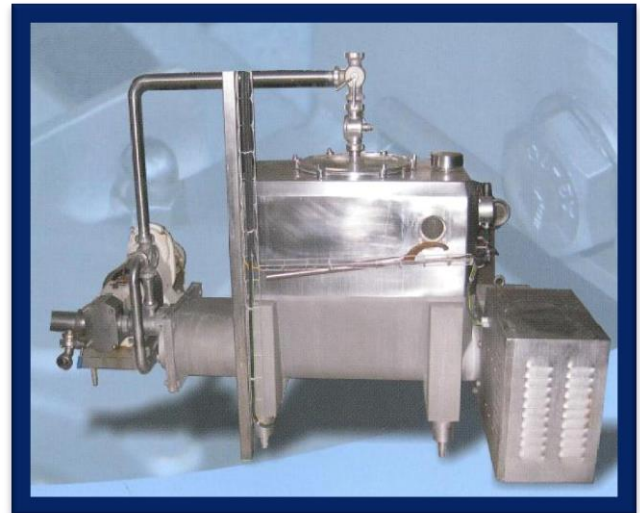
## DMC -1 \* DMC - 2

**Butter silo and transport butter pipeline** is connected to a connecting by pipeline to the mouth of butter making machines and serves as a reservoir of butter and butter transporting equipment to packaging equipment of butter. It can be used for any type of continuous butter making machine.

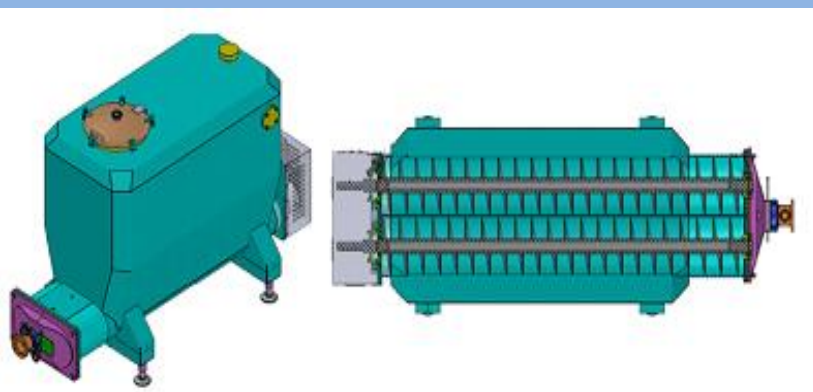
*The device prevent contact butter with the environment during its movement between the continuous butter making machine and the packing machine.*

**In a stainless steel container for butter of a capacity 1 or 2 m cubic is stored screw conveyors and butter move to the mouth transport butter. The screws are driven by a screw gear housing with an electric motor. At the mouth of the device is connected butters pump.**

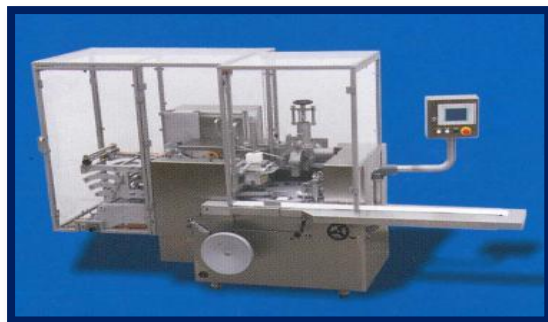
**The device has its own power and control panel can be connected to control of butter making machine. It is equipped with a safety relief valve, butter is returned to the container at an elevated pressure of butter in the pipeline.**



Parameters	type DMC-1, type DMC-2
Output	up to 3 000 kg/hour
Capacity of the silo	1000 - 2000 liters
Power consumption	2 kW/1 000 kg of transported butter
Weight of the machine	approx. 1 100 kg
Working life	15 -20 years
The device is suitable for butter line with capacity from 1000 up to 3000 kg/hour.	
All parts coming into contact with butter are made of stainless steel.	



# OTHER EQUIPMENT FOR PROCESSING AND PACKAGING OF BUTTER

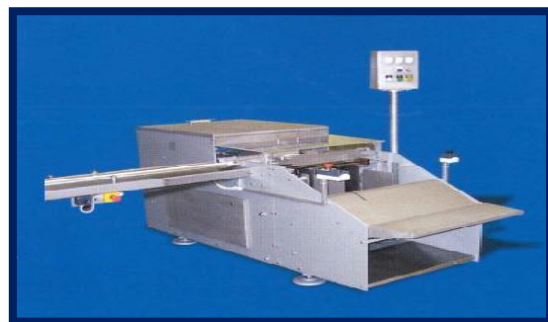


## Filling, forming and wrapping machines

Carousel forming, filling and wrapping machines into the foil suitable for pasty products such as: butter, margarine and other vegetable fats, lard, cream cheese, cottage cheese etc.

**Weight of the packets:** 10- 500 g

**Parchment or laminated aluminium foil, or other materials of suitable quality.**



## Cartoning machine

Automatic and semiautomatic group cartoning machines are designed for grouping of packets of butter, quark and other products. The groups are inserted into the cartons according to customer's request. Speed of the machine is automatically regulated according to the filling machine. Feeding of the machine – via conveyor.

**Output:** 60-140 packets/min. (according to the current speed of wrapping machine)



## Butter homogenizer

Homogenizer reduces costs in processing stocks, due to the time needed for thawing, improving the quality of butter and reduce water loss during packaging. Construction is made completely from stainless steel.

**Output:** 800-1600 kg/hour



## Semiautomatic block packing machine

The device consists of two filling places, which are alternately operated. The machine is easy operate and clean thanks to optimal design, it is made from top quality stainless steel.

**Filling output:** 1500-4500 kg/hour

**Weight of block:** 15-40 kg, other formats available



## Equipment for the treatment of cream

This is a treatment device cream before entry into continuous butter making machines. The device contains buffer tank of cream, plate heater of cream, stave cooler of cream, dosing pump volumetric cream, centrifugal pumps for washing and complete regulation on the monitoring of temperatures of cream before are entry raw materials into continuous butter making machine.



**B e H o spol. s r.o.**

Staré Ransko 90  
CZ – 582 63 Krucemburk  
Czech Republic

Tel.: +420 561 202 022-5  
Fax: +420 569 697 324  
E-mail: beho@beho.cz