

**Complete Lines for Butter Production  
and Packing  
Continuous Butter-Making Machines, Butter  
Holders  
Cream Processing Machines, Butter Packers  
Additive Dosers  
Other Accessories  
Project Documentation**



**Manufacture      Assembly      Servicing**

**Company B e H o spol. s r.o. is a supplier of  
modern butter-making and butter-packaging  
facilities, a company that boasts of a tradition of  
more than 50 years.**

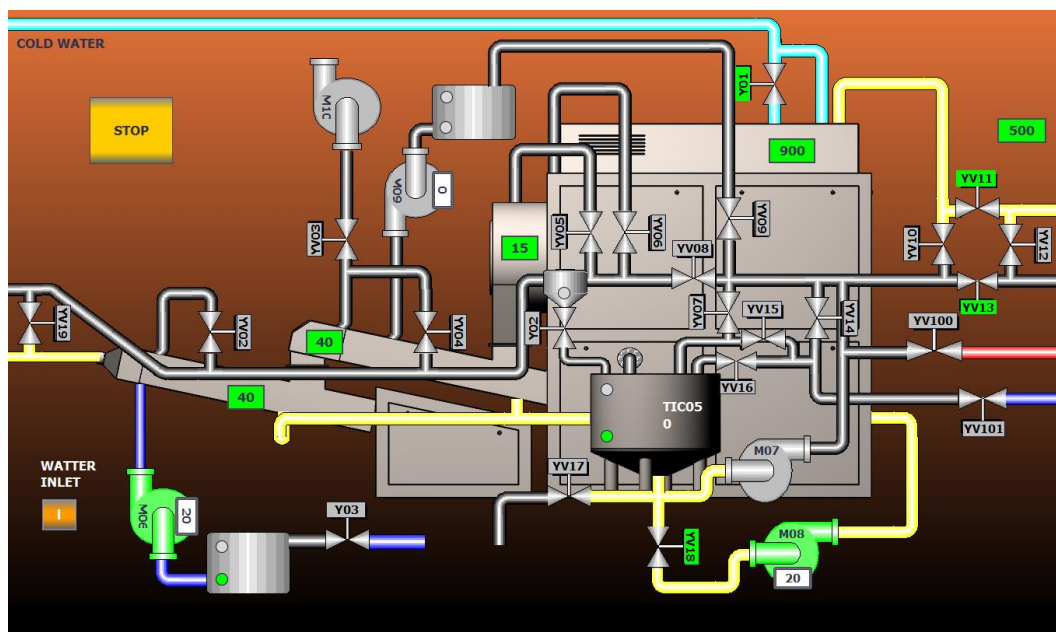


# Complete Lines

Company B e H o spol. s r.o. offers delivery of lines or line sections according to clients' wishes, including project documentation, commissioning and operator training. It also offers warranty and post-warranty servicing.



Butter-production lines made by B e H o spol. s r.o. are controlled on a high level of automation; they are fully automatic in various modes such as washing and sanitation. The central control system provides all important information about the production process and butter parameters.





# Continuous Butter-Making Machines

A continuous butter-making machine is the heart of each butter-making line. It is a traditional product of B e H o spol. s r.o.



Company B e H o spol. s r.o. offers a new modern range of butter-making machines, type KZ, meeting high quality requirements for butter. At clients' request, we perform complete overhauls or refurbishments of older butter-making machines, types ZKU and KM.



Parameters	types KZ - ZKU - KM
Output of the facility	400 – 6 000 kg/ hod.
Fat-content of the processed cream	36 - 44 %

## Butter Holders

Butter holders with incorporated screw conveyors are further line equipment. They represent a new, modernized type of butter holders with a cooling duplicator option.



Parameters	
Volume	0,8 – 3 m <sup>3</sup>



## Other Accessories

**Cream-Processing Machine**

**Dosing of Water and Additives**

**Butter Packers**

**Cream Maturing and Storage Tanks**



## Barrel Churns

Facilities for the production of butter from smaller volumes of cream for applications where investments in continuous production is not economical, or for using cream with smaller fat content or whey cream. Discontinuous production in batches from 50 litres to 1,500 litres. It is supplied with a screw butter kneader as an accessory.



## Servicing

Company B e H o spol. s r.o. provides fast and reliable servicing, including supply of spare parts throughout the life of the machines. Additionally, the company offers complete overhauls or refurbishments of the machines, or rebuilding of lines, including project work.



**B e H o spol. s r.o.**

Staré Ransko 90

CZ – 582 63 Kruceburk

Czech Republic

**[www.beho.cz](http://www.beho.cz)**

Tel.: +420 777 812 013

+420 561 202 024-5

Fax: +420 569 697 324

E-mail: [pavel.benc@behoc.cz](mailto:pavel.benc@behoc.cz)

[behoc@behoc.cz](mailto:behoc@behoc.cz)